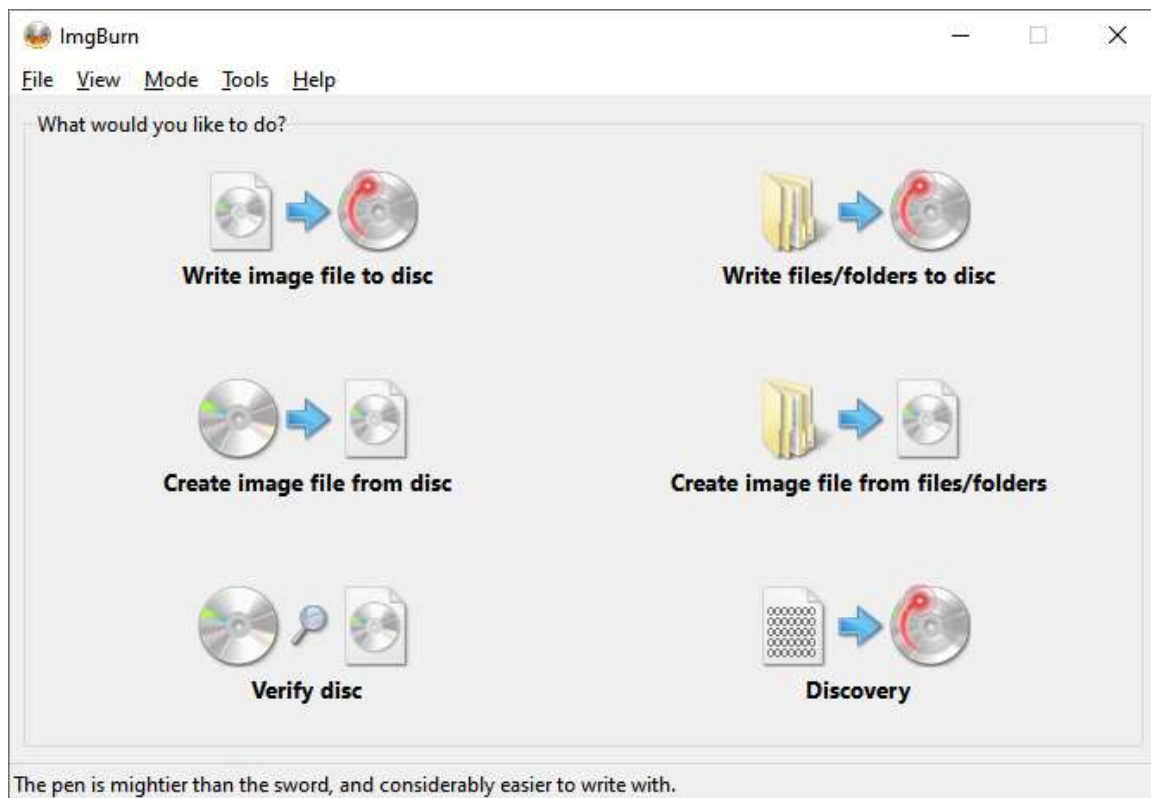


Congratulations on the purchase of the new maps!

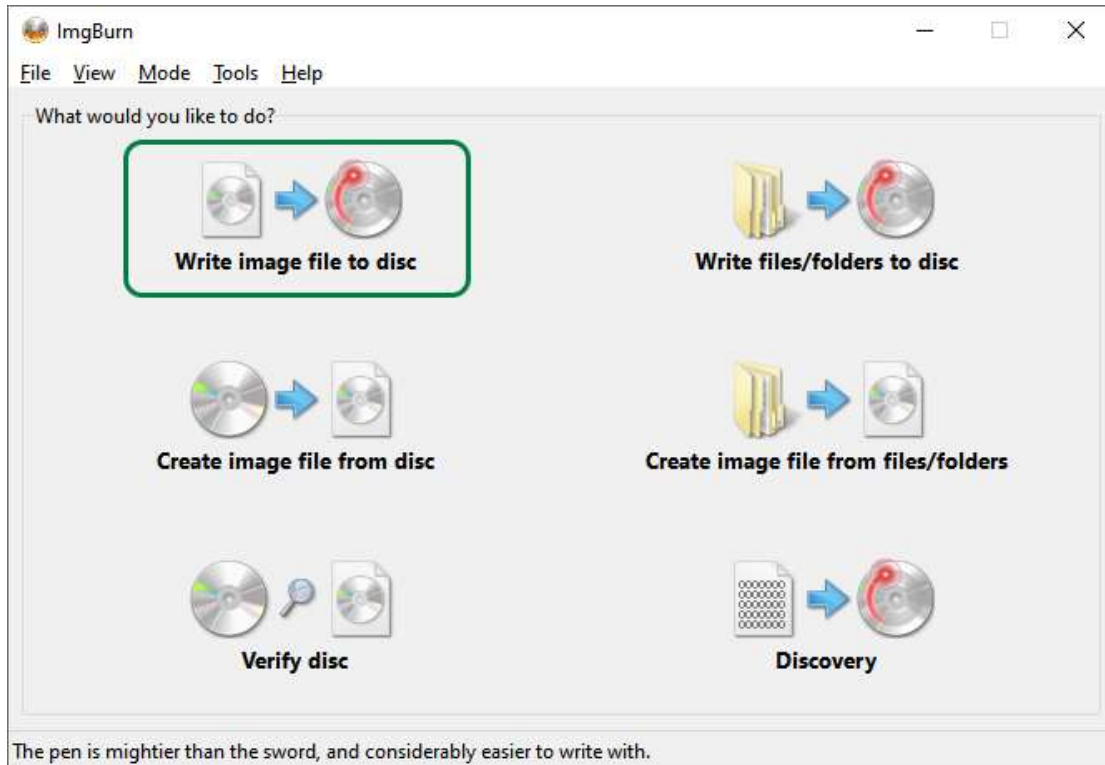
This user guide will help you to make the map DVD for your BMW.

1. Take a blank **DVD-R** (please note that DVD-R and DVD+R are different disc. You need a DVD-R). Please use high quality branded single layer DVD-R disc. **Verbatim** brand is highly recommended to avoid any issues in using the maps in your car in the future.
2. Download ImgBurn software (if you do not have it installed). ImgBurn is free and you can download it here: <https://www.imgburn.com/index.php?act=download>
3. Insert your blank DVD-R disc into your DVD drive and start ImgBurn.

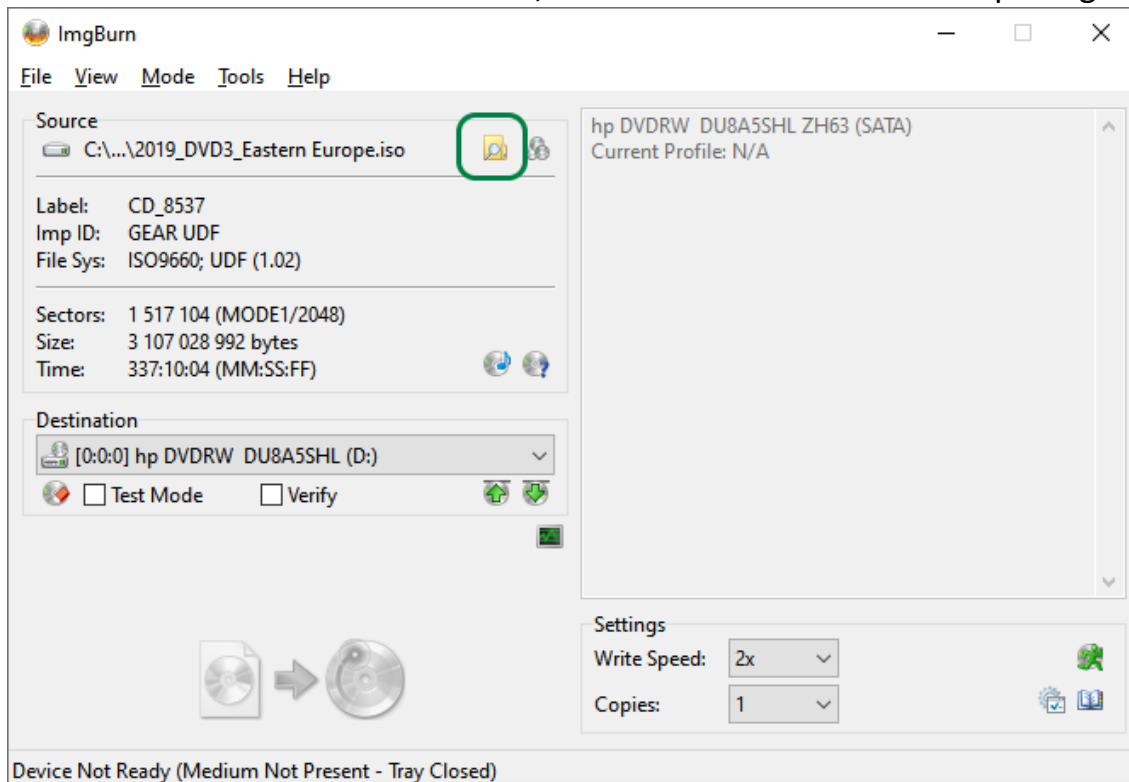
The following screen will appear:



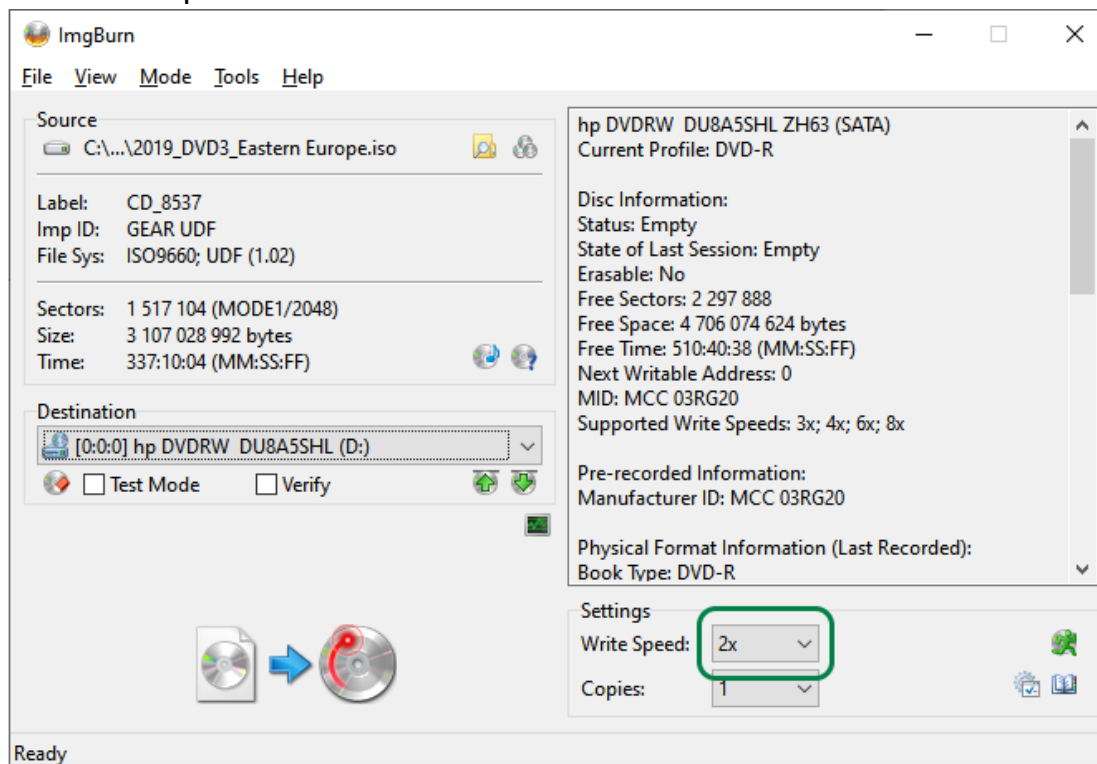
4. Choose 'Write image file to disc' button:



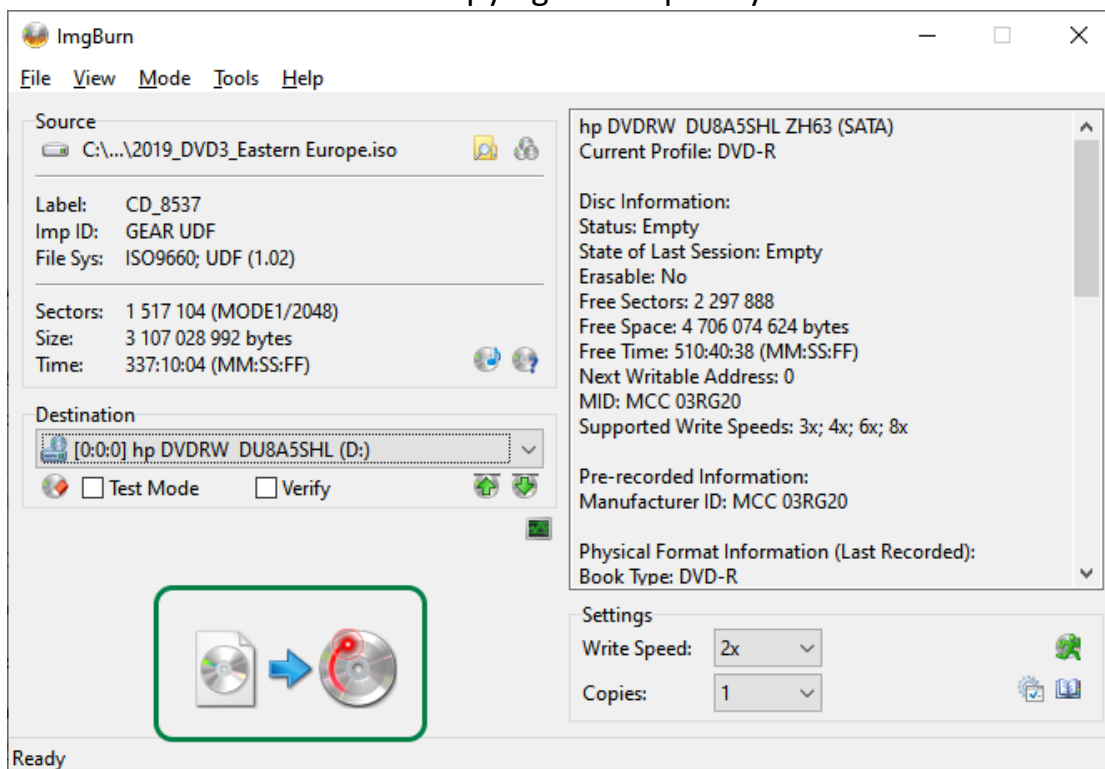
5. Choose 'Please select a file' button, then choose downloaded map image:



6. Set 'Write speed' to the minimal available value:



7. Click 'Write' button to start copying the maps to your DVD-R disc:



8. After the copying process is finished, eject your DVD, **do not start the engine**, and insert your DVD to your car navigation DVD drive (the lower drive, not upper one):



9. Usually, the system loads new map in about 2 minutes and you are ready to go.

If the system says 'New DVD version, please shut down system and restart after 5 minutes', just leave your car, lock it with your key and wait for 5 minutes. After that, you are ready to go.

Have nice journeys!